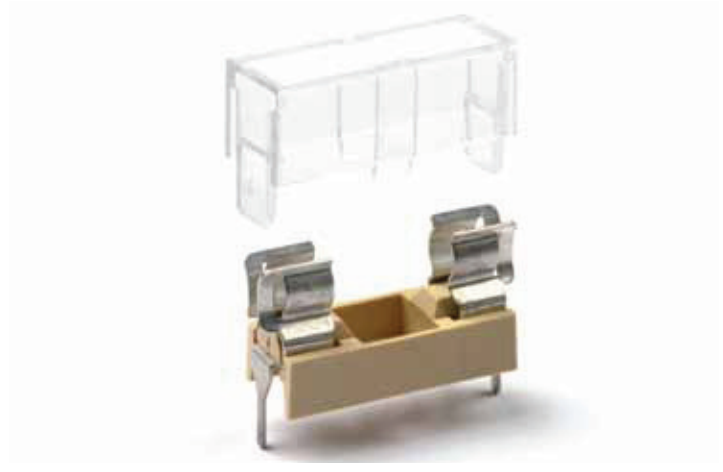




FUSIBILE TIPO
FUSE LINK 5 x 20 mm

MONTAGGIO
MOUNTING CS
PCB



Corrente nominale Rated Current	A	6,3	
Tensione nominale Rated Voltage	VAC	250	
Potenza dissipabile Rated Power Acceptance	W	1,6	
Corpo isolante Housing	—	PPOM - UL 94 V1	
Temperatura ambiente ammissibile Admissible ambient air temperature	°C	-30 °C to 85 °C	
Protezione contro le scosse elettriche Shocksafe category	PC	PC1	
Grado di protezione Degree of protection	IP	IP00	
Resistenza di contatto Contact Resistance	mΩ	< 5	
 EN 60127-6	Corrente Nominale Rated Current	A	6,3
	Tensione nominale Rated Voltage	VAC	250
	Potenza dissipabile Rated Power Acceptance	W	1,6
 UL 512 + C22.2 no. 39	Corrente Nominale Rated Current	A	10
	Tensione nominale Rated Voltage	VAC	250
	Potenza dissipabile Rated Power Acceptance	W	—
Colore standard Standard colour	—	giallo - yellow	
Altri colori Other colours	—	A richiesta - On demand	
Accessori Accessories	Pag	sezione A3 - section A3	
Altri dati Other information	Pag	sezione B/A1- section B/A1	

