

These filters grant an high insertion loss of the temporary events with a spectrum of large band and high wideness.

I filtri di questa serie garantiscono un'alta attenuazione dei fenomeni transitori con spettro di larga banda e di elevata ampiezza.

**Circuit diagram**



**Mechanical Specifications:**

**Manufacture**

Self extinguishing plastic case and cover, internal components sealed with self-extinguishing resin Vo

**Connections**

ARC02.A: finned wires  
ARC02.B: flexible leads

**Electrical specifications**

<b>Reference standard</b>	IEC 60068, CEI 40-7 VDE 565-1
<b>Climatic category</b>	55/100/56 (IEC 60068/1) FMD (DIM 40040)
<b>Power of resistor</b>	1/2W. Other values available upon request
<b>Operating Temp. range</b>	-55°C / +100°C
<b>Voltage test between terminals</b>	1.6 Vn applied for 2s. at 25°±5°C
<b>Voltage test between terminals and case</b>	2500 Vn applied for 2s. at 25°±5°C
<b>Insulation resistance</b>	IR ≥ 30000 MΩ for CR ≤ 0.33μF IR ≥ 10000 S for CR > 0.33μF

**Caratteristiche tecniche:**

**Costruzione**

Custodia plastica autoestinguente, componenti interni sigillati con resina autoestinguente Vo

**Terminali**

ARC02.A: filo di rame rigido  
ARC02.B: cavetti flessibili

**Caratteristiche elettriche:**

<b>Normative riferimento</b>	IEC 60068, CEI 40-7 VDE 565-1
<b>Categoria climatica</b>	55/100/56 (IEC 60068/1) FMD (DIM 40040)
<b>Potenza Resistenza</b>	1/2W. Altri valori a richiesta
<b>Temperatura esercizio</b>	-55°C / +100°C
<b>Tensione di prova tra i due terminali</b>	1.6 Vn applied for 2s. at 25°±5°C
<b>Tensione di prova tra i due terminali e la custodia</b>	2500 Vn applied for 2s. at 25°±5°C
<b>Resistenza di isolamento</b>	IR ≥ 30000 MΩ for CR ≤ 0.33μF IR ≥ 10000 S for CR > 0.33μF

Code	Capacity (μF)	Dimension 400V-/200 V~				Dimension 630V-/275 V~				Dimension 1000V-/400 V~				R (Ω)
		B	H	L	D	B	H	L	D	B	H	L	D	
ARCO2A 0,10	0,1	10	18,5	26,5	22,5	10	18,5	26,5	22,5					
ARCO2A 0,25	0,25	10	18,5	26,5	22,5	10	18,5	26,5	22,5	13	22	32	27,5	
ARCO2A 0,50	0,5	13	22	32	27,5	13	22	32	27,5					
ARCO2B 0,10	0,1					10	18,5	26,5	22,5	13	22	32	27,5	10-47-100-220
ARCO2B 0,25	0,25	10	18,5	26,5	22,5	10	18,5	26,5	22,5	13	22	32	27,5	470-1000
ARCO2B 0,50	0,5	13	22	32	27,5	13	22	32	27,5	22	27	31,5	27,5	

**Mounting**

RC units are mounted in parallel with the contacts to be protected or in parallel with the inductive load (fig. 1-2). RC units are generally mounted in parallel with the contacts to suppress radio interference (fig. 1).

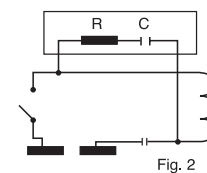


Fig. 2

**Montaggio**

I gruppi RC possono essere montati in parallelo ai contatti da proteggere o in parallelo alla bobina (Fig. 1-2). Gli RC vengono generalmente montati in parallelo ai contatti per eliminare le radio interferenze (Fig. 1).

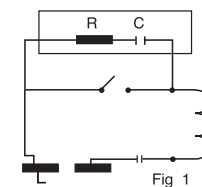
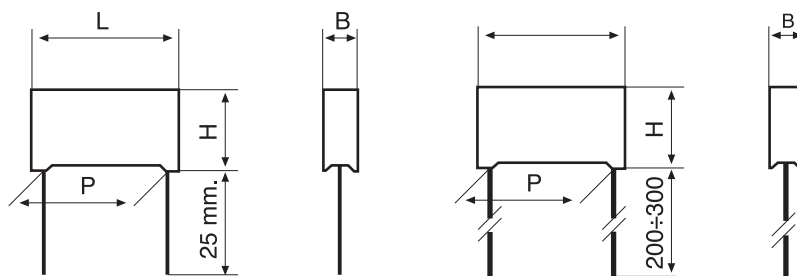


Fig. 1

**Dimensions**



Tinned wire

Flexible leads

↑ 3 min.

**APPROVALS**

