

# ET12-5.2 (12V 5.2AH)

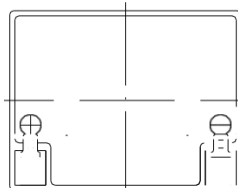
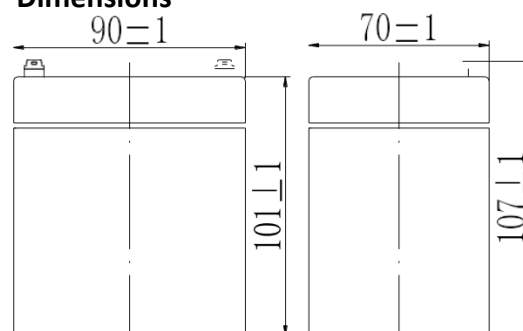


## Specifications

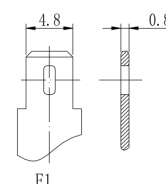
Nominal Voltage		12 V
Capacity (25°C)	10HR(10.8V)	5.2 Ah
	5HR(10.5V)	4.88 Ah
	1HR(9.60V)	3.32 Ah
Dimension	Length	90±1 mm (3.54 inch)
	Width	70±2 mm (2.76 inch)
	Height	101±2 mm (3.98 inch)
	Total Height	107±2 mm (4.21 inch)
Approx. Weight		1.6 kg (3.53 lbs)±4%
Terminal type		F1
Internal resistance (Fully charged, 25°C)		Approx. 26 mΩ
Capacity affected by temperature	40°C	102%
	25°C	100%
	0°C	85%
	-15°C	65%
Self-discharge (25°C)	3 month	Remaining Capacity: 91%
	6 month	Remaining Capacity: 82%
	12 month	Remaining Capacity: 65%
Nominal operating temperature		25°C±3°C(77°F±5°F)
Operating temperature range	Discharge	-15°C~50°C(5°F~122°F)
	Charge	-10°C~50°C(14°F~122°F)
	Storage	-20°C~50°C(-4°F~122°F)
Float charging voltage(25°C)		13.60 to 13.80V Temperature compensation: -18mV/°C
Cyclic charging voltage(25°C)		14.50 to 15.00V Temperature compensation: -30mV/°C
Maximum charging current		1.5A
Maximum discharge current		75A (5 sec.)
Designed floating life(20°C)		5 years



## Dimensions



## Terminals



## Constant Current Discharge Characteristics (Ampere @ 25°C)

F.V/TIME	10min	15min	30min	60min	2h	3h	4h	5h	10h	20h
9.60V	19.1	12.1	9.45	5.33	1.79	1.24	1.03	0.87	0.47	0.25
9.90V	18.5	11.7	9.22	5.22	1.78	1.23	1.02	0.87	0.47	0.25
10.2V	17.8	11.3	8.88	5.06	1.77	1.22	1.01	0.86	0.47	0.25
10.5V	17.0	10.8	8.58	4.94	1.74	1.22	1.01	0.86	0.47	0.25
10.8V	16.0	10.2	8.13	4.76	1.69	1.18	0.97	0.83	0.46	0.25

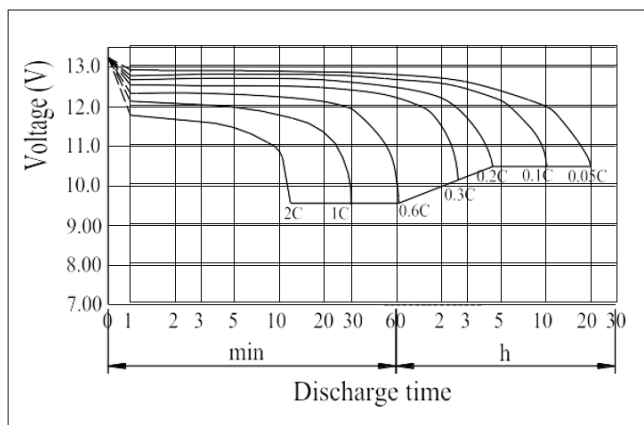
## Constant Power Discharge Characteristics (Watt @ 25°C)

F.V/TIME	10min	15min	30min	60min	2h	3h	4h	5h	10h	20h
9.60V	213	136	61.0	37.9	21.0	14.7	12.2	10.4	5.68	3.05
9.90V	207	132	59.8	37.4	20.8	14.6	12.1	10.4	5.66	3.03
10.2V	198	127	58.0	36.4	20.7	14.5	12.1	10.3	5.63	3.02
10.5V	190	121	56.6	35.7	20.3	14.4	12.0	10.2	5.60	3.00
10.8V	179	115	54.5	34.6	19.8	14.0	11.6	9.90	5.49	2.94

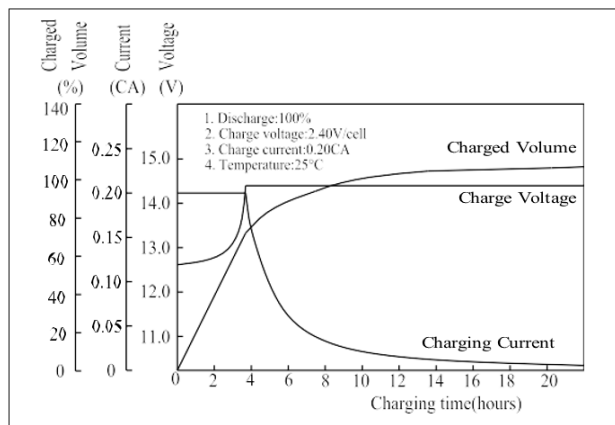
## Construction

Component	Positive plate	Negative plate	Container	Cover	Separator	Electrolyte	Safety valve	Terminal
Raw material	Lead dioxide	Lead	ABS	ABS	AGM	Sulfuric acid	Rubber	Copper

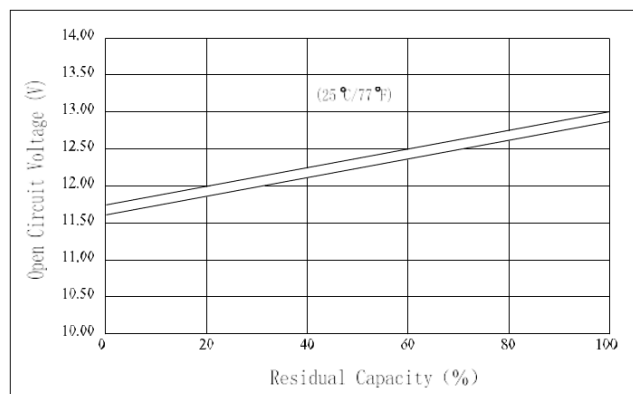
## Discharge Characteristics (25°C)



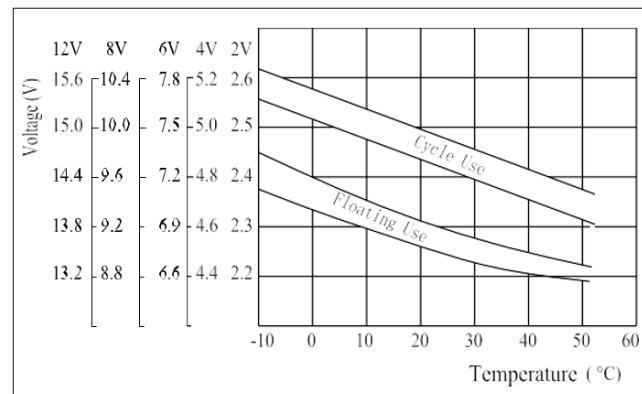
## Charging Characteristics (25°C)



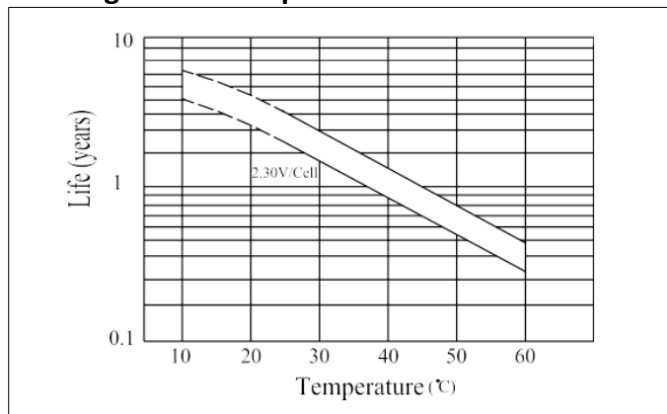
## The Relationship for Open Circuit Voltage and Residual Capacity (25°C)



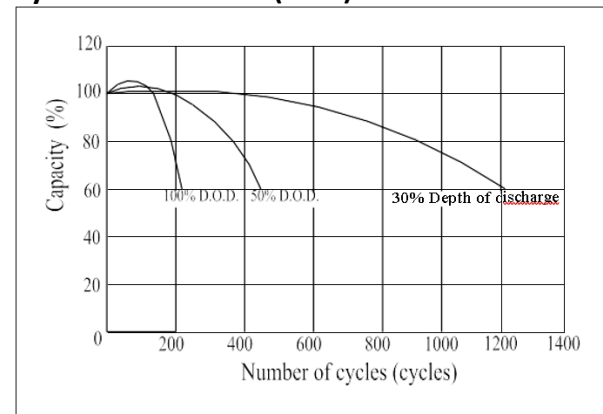
## The Relationship for Charging Voltage and



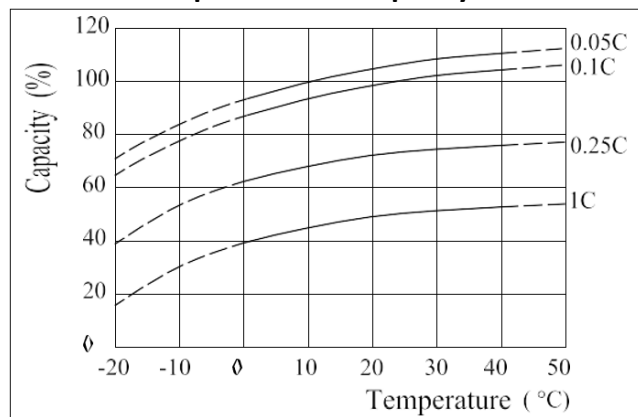
## Floating Life on Temperature



## Cycle Life on D.O.D (25°C)



## Effect of Temperature on Capacity



## Self-discharge Characteristics

