



ARO2

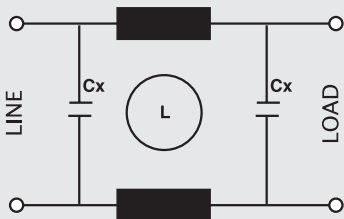
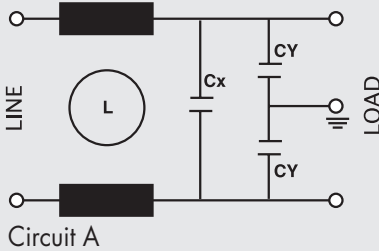


ARO2.V

Printed circuit filter, small and economic, it protects the circuit against noises by the net and eliminates spurious emissions.

Filtro da circuito stampato, compatto, economico, protegge l'apparecchiatura dai disturbi provenienti dalla rete e limita le emissioni spurie.

**Circuit diagram**



For medical applications

**Mechanical Specifications:**

**Manufacture**  
plastic case sealed with self-extinguishing resin

**Connections**  
for PCB mounting,  
or 2.8 x 0.5 mm or flexible leads

**Electrical specifications:**

<b>Rated voltage (Vr)</b>	max 250 V to 400 Hz
<b>Rated current (Ir)*</b>	referred to room temp.= 40°C
<b>Leakage current (IL)</b>	≤ 0,25 mA circuit B ≤ 0,02 mA
<b>Voltage test (2s.)</b>	line to ground 3000Vdc or 1800 Vac line to line 1700 Vdc
<b>Climatic category</b>	HPF (25/085/21) -25°C to +85°C

**Caratteristiche tecniche:**

**Costruzione**  
Custodia plastica sigillata  
in resina autoestinguente Vo

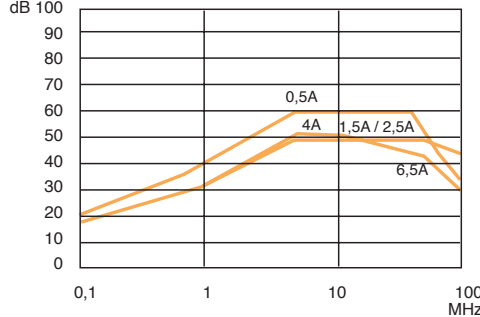
**Terminali**  
per montaggio da circuito stampato,  
con faston 2.8 x 0.5 mm  
o con fili flessibili.

**Caratteristiche elettriche:**

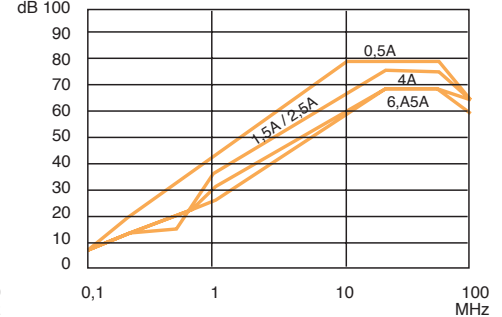
<b>Tensione nominale (Vr)</b>	max. 250V~ a 400 Hz
<b>Corrente nominale (Ir)*</b>	referita ad una temp.di 40°C
<b>Corrente di fuga (IL)</b>	≤ 0,25 mA circuito B ≤ 0,02 mA
<b>Tensione di prova (2s.)</b>	linea e massa 3000Vdc o 1800 Vac linea e linea 1700 Vdc
<b>Categoria climatica</b>	HPF (25/085/21) -25°C a +85°C

Code	IR (A)*	Cx (µF)	Cy (pF)	L (mH)	Circuit
ARO2.0.5A	0.5	0,1	2500	40	A
ARO2.1.5A	1.5	0,1	2500	6	A
ARO2.2.5A	2.5	0,1	2500	2	A
ARO2.4A	4	0,1	2500	1	A
ARO2.6.5A	6.5	0,1	2500	1	A
ARO2.10A	10	0,1	2500	0,35	A
ARO2.E.0.5A	0.5	0,1	-	40	B
ARO2.E.1.5A	1.5	0,1	-	6	B
ARO2.E.2.5A	2.5	0,1	-	2	B
ARO2.E.4A	4	0,1	-	1	B
ARO2.E.6.5A	6.5	0,1	-	1	B
ARO2.V.0.5A	0.5	0,1	2500	40	A
ARO2.V.1.5A	1.5	0,1	2500	6	A
ARO2.V.2.5A	2.5	0,1	2500	2	A
ARO2.V.4A	4	0,1	2500	1	A
ARO2.V.6.5A	6.5	0,1	2500	1	A
ARO2.V.10A	10	0,1	2500	0,35	A
ARO2.VE.0.5A	0.5	0,1	-	40	B
ARO2.VE.1.5A	1.5	0,1	-	6	B
ARO2.VE.2.5A	2.5	0,1	-	2	B
ARO2.VE.4A	4	0,1	-	1	B
ARO2.VE.6.5A	6.5	0,1	-	1	B

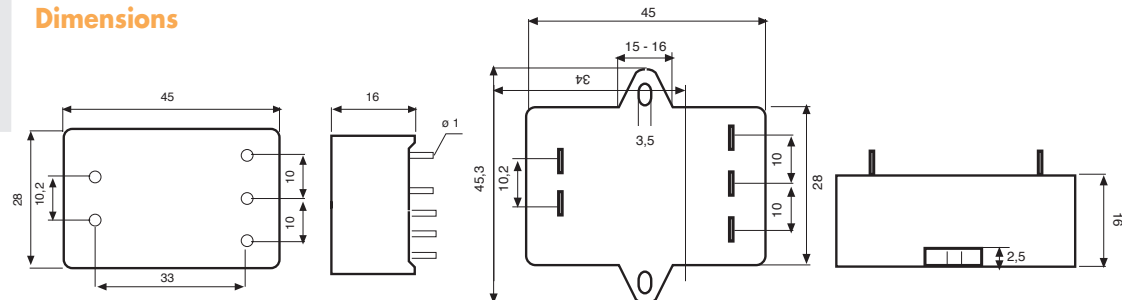
Symmetrical (Line to line)



Asymmetrical (Line to ground)



**Dimensions**



- **Electronics**
- **High Power**
- **Electromechanical**
- **Custom**

