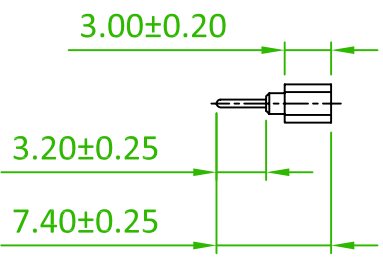
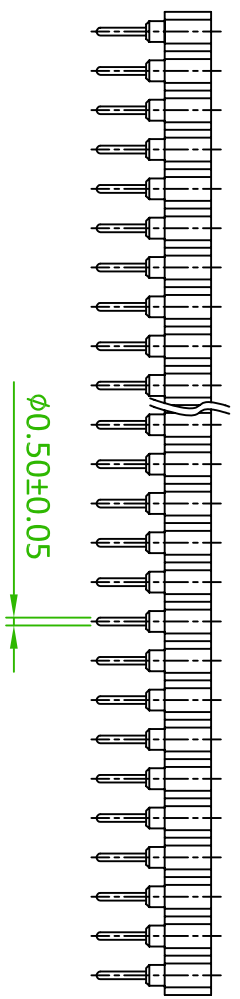
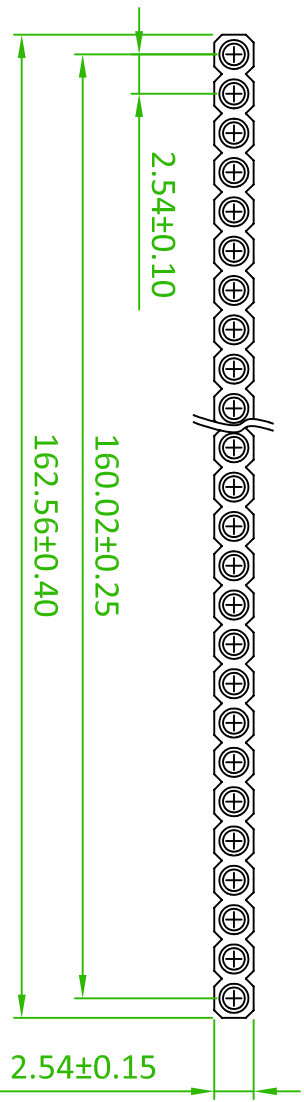
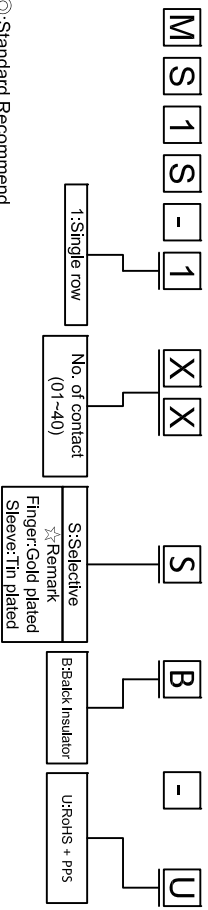


**SPECIFICATION**

Current Rate:3 AMP  
 Insulation Resistance:≥1000MΩ at V=100V.  
 Contact Resistance:≤10mΩ/Contact  
 Dielectric voltage:1000V AC for one minute  
 Operation Temperature:-40°C to +105°C

**MATERIAL**  
 Insulator:PPS(UL94V-0)  
 Contact Pin:Copper Alloy

**ORDER INFORMATION**



**P.C.Board Layout**



AREA	REV.	DESCRIPTION	DATE

<p>Amitek 耀德精密有限公司                  Amitek Technology Co., Ltd.                  TEL:86-2-2268-8036                  FAX:86-2-2268-8033</p>		Machine Pin 2.54mm	
品名	MS1S-1XX-U	日期	2011/10/14
品號	MS1S-1XX-U	繪圖	Joe
圖號	MS1S-1XX-U	版本	A
客戶品號	MS1S-1XX-U	比例	FREE
CUSTOMER P/N	MS1S-1XX-U	SCALE	FREE
公差	.X ±0.20 .XX ±0.10	單位	mm
TOLERANCE	.X ±0.20 .XX ±0.10	UNIT	mm
		核對	Debby
		CHECKED	
		核准	James
		APPROVED	