

TERMINAL BLOCKS FOR P.C.B. RISING CLAMP

MORSETTI PER C.S. CARRELLO

BLOCS DE JONCTION C.I. ÉTRIER REMONTANT

PRINTKLEMMEN LIFTPRINZIP

CPP

CPP..SQ*


Interlocking modules · Modulo componibile
Elements modulaires · Zusammensteckbare Blöcke




Poles · Poli · Pôles · Polzahl

2/3



Pitch Pas	Passo Rastermaß	mm
Rated Voltage Tensione nominale Tension nominale	Tensione nominale Bemessungsspannung	V
Rated Current Intensité nominale	Corrente nominale Bemessungsstrom	A

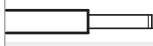
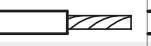


Types of cables Type du conducteur	Tipo cavi Leitungstypen	
Nominal cross section Section nominale	Sezione nominale Nennquerschnitt	mm ² AWG
Stripping length Longueur de dénudage	Lunghezza spelatura Abisolierlänge	mm
Torque Couple de serrage	Coppia di torsione Drehmoment	Nm Lb-in
Temperature Température	Temperatura Temperatur	°C
Housing Corps isolant	Corpo isolante Isolierkörper	
Captive Screw Vis Imperdabile	Vite Imperdibile Unverlierbare Schraube	
		mm

	IMQ	EN60998
	VDE	EN60998
	cUL	UL1059 + C22.2 n°158

Poles Pôles	Poli Polzahl	X
Colours Couleurs	Colori Farben	Y

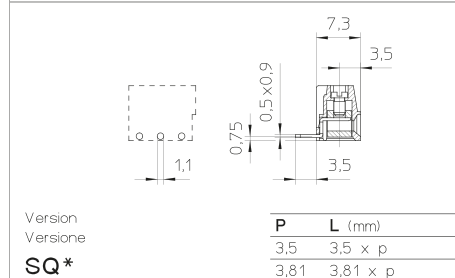
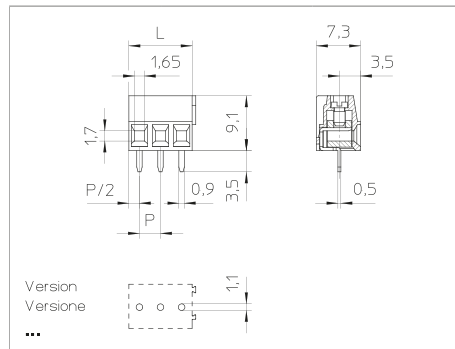
How to order Référence de commande	Ordinazione Bestellschlüssel
CPP 3,5 / X	SQ Y N...
Type Pitch Poles	Version Colors Printing
Tipo Passo Poli	Versione Colori Numerazione
Type Pas Pôles	Version Couleurs Marquage
Typ Rastermaß Polzahl	Version Farben Bedruckung

3,5 - 3,81		
160		
10		

		
0,2 ÷ 1,5 30 ÷ 16	0,2 ÷ 1,5 30 ÷ 16	0,2 ÷ 1,5 30 ÷ 16
6		
0,3	/	2,5
110		
PA - UL 94 V0		
M2		
 0,5 x 2,5		

V	A	mm ² /AWG
130	10	0,2 ÷ 1
130	10	0,2 ÷ 1,5 P*
300	10	30 ÷ 16

min 2 - max...		
VE	/ on demand	GR GR1 NE AR BL RO GI



*P = Pending

*SQ Version = Horizontal version