

# MF 423 3W SERIES

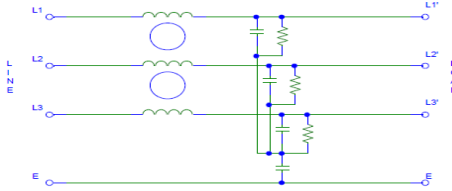


## Features

- Chassis Mounting 3 Phase Filter
- General Purpose
- Compact
- Superior Performance

## Technical Specification

- Maximum Operating Voltage: 440 VAC
- Operating Frequency: 50/60Hz
- Rated Current: 1A to 150A
- High Potential test voltage:  
L to G 2120VAC FOR 250V  
L to L 1414VDC FOR 250V
- Overload Capability: 6 x Rated current for 8sec
- Temperature Range :-25 °C to 85 °C
- Earth Leakage Current : 1 mA max  
(Also available in low leakage Current)



## Application

- For UPS, Special purpose machines.
- Elevators
- CNC Machines
- Drives
- AC/DC Drives
- SCR Drives
- Rectifier
- Convertors
- Inverters

## Presentation

Nickel Plated Steel/Aluminium

## Mounting

Screw Mount or Panel Mount

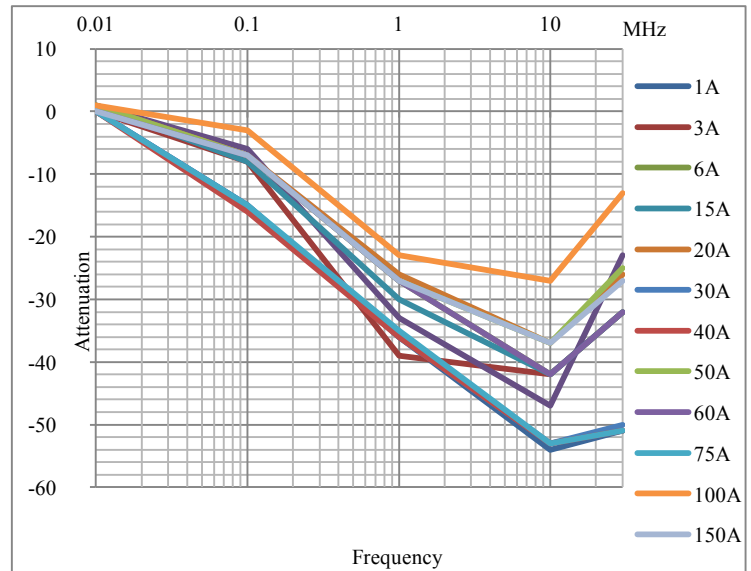
## Termination

Fastons or Cable or Screw

## How to Order

Part No.	Rated Current	Case	Termination
MF 423-01-H	1A	H4	Fastons/Cable
MF 423-03-H	3A	H4	Fastons/Cable
MF 423-06-H	6A	H4	Fastons/Cable
MF 423-10-H	10A	H4	Fastons/Cable
MF 423-15-K	15A	K3	M5Screw/Cable
MF 423-20-K	20A	K3	M5Screw/Cable
MF 423-30-K	30A	K3	M5Screw/Cable
MF 423-40-K	40A	K3	M5Screw/Cable
MF 423-50-SX	50A	SX4	M6Screw/Cable
MF 423-60-SX	60A	SX4	M6Screw/Cable
MF 423-75-R4	75A	R4	M8Screw/Cable
MF 423-100-R4	100A*	R4	M10Screw/Cable
MF 423-150-R4	150A*	R4	M10Screw/Cable

## Insertion Loss



\*Not covered under CSA / C-US/NEMKO

\*\* For Customised filter Contact our sales department