



Thanks to its excellent insertion loss, the circuit filter AR05 works out many filter problems in cheap way.

Il filtro AR05 grazie ad un'ottima attenuazione risolve in modo economico molti problemi di filtraggio.

**Mechanical Specifications:**

**Manufacture**  
plastic case sealed with self-extinguishing resin Vo

**Connections**  
faston 2.8 x 0.5 mm

**Electrical specifications:**

<b>Rated voltage (Vr)</b>	max 250 V to 400 Hz
<b>Rated current (Ir)*</b>	referred to room temp.= 40°C
<b>Leakage current (IL)</b>	≤ 0,25 mA circuit B ≤ 0,02 mA
<b>Voltage test (2s.)</b>	line to ground 3000Vdc or 1800 Vac line to line 1700 Vdc
<b>Climatic category</b>	HPF (25/085/21) -25°C to +85°C

**Caratteristiche tecniche:**

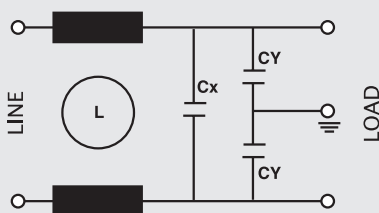
**Costruzione**  
Custodia plastica sigillata in resina autoestinguente Vo

**Terminali**  
faston 2.8 x 0.5 mm

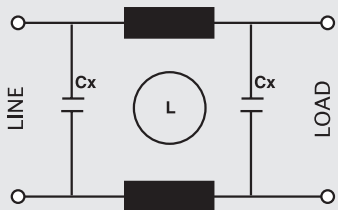
**Caratteristiche elettriche:**

<b>Tensione nominale (Vr)</b>	max. 250V~ a 400 Hz
<b>Corrente nominale (Ir)</b>	*riferita ad una temp.di 40°C
<b>Corrente di fuga (IL)</b>	≤ 0,25 mA circuit B ≤ 0,02 mA
<b>Tensione di prova (2s.)</b>	linea e massa 3000Vdc o 1800 Vac linea e linea 1700 Vdc
<b>Categoria climatica</b>	HPF (25/085/21) -25°C a +85°C

**Circuit diagram**

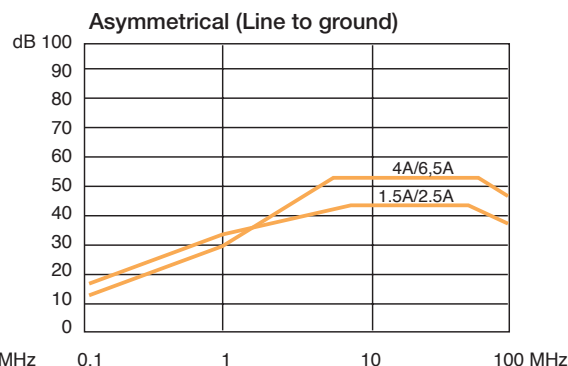
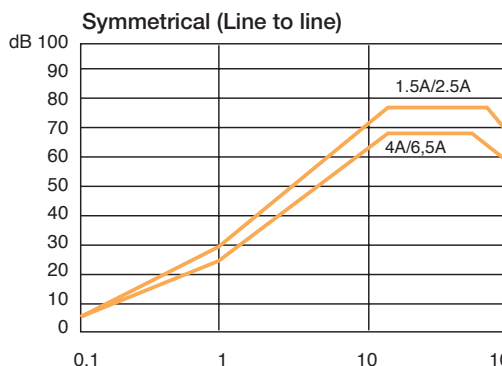


Circuit A

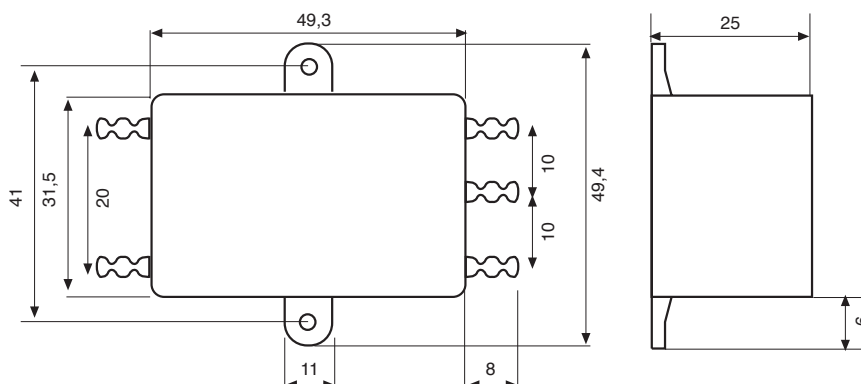


Circuit B  
For medical applications

Code	IR (A)*	Cx (µF)	Cy (pF)	L (mH)	Circuit
AR05.1.5A	1.5	0,1	2500	6	A
AR05.2.5A	2.5	0,1	2500	2	A
AR05.4A	4	0,1	2500	1	A
AR05.6.5A	6.5	0,1	2500	1	A
AR05.10A	10	0,1	2500	0,35	A
AR05.E.1.5A	1.5	0,1	-	6	B
AR05.E.2.5A	2.5	0,1	-	2	B
AR05.E.4A	4	0,1	-	1	B
AR05.E.6.5A	6.5	0,1	-	1	B



**Dimensions**



- **Electronics**
- **High Power**
- **Electromechanical**
- **Custom**

