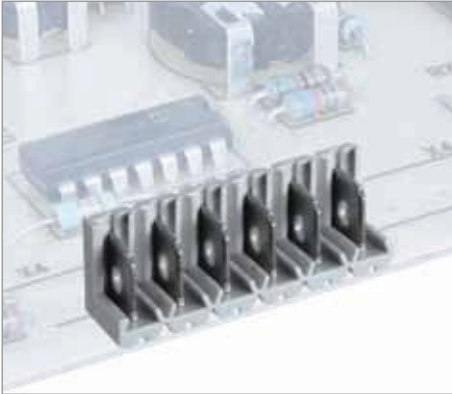


CUM

Blocco unico
Monobloc

Single block
Einzelblock

Poli Poles 2/36 (5)
Póles Polzahl 2/18 (10)



5	10
250	500
16	

130	
PC - UL 94 V0	

V	A	mm ² /AWG
250 (5)	500 (10)	16
250 (5)	500 (10)	16
300	14	24 ÷ 12

min 2 - max ...	
VE	
D/B4	

Versione
Version

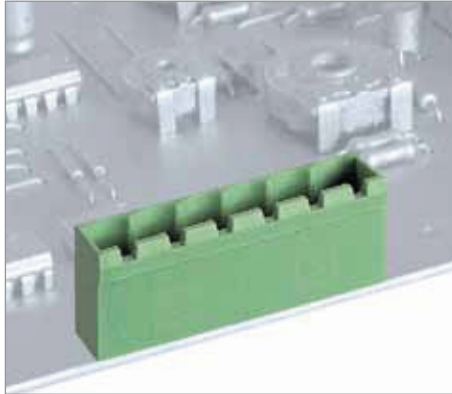
P	L (mm)
5	5 x p
10	(10 x p) -5

CPM

Blocco unico
Monobloc

Single block
Einzelblock

Poli Poles 2/24



5	5,08
320	
20	

160	
PA - UL 94 V0	

V	A	mm ² /AWG
320	20	0,2 ÷ 2,5
320	20	0,2 ÷ 2,5
300	12	24 ÷ 12

min 2 - max 24	
VE	
D/B4	

Versione
Version

P	L (mm)	X
5	(5 x p)+1,2	3,1
5,08	(5,08 x p)+1,2	3,14

Versione
Version

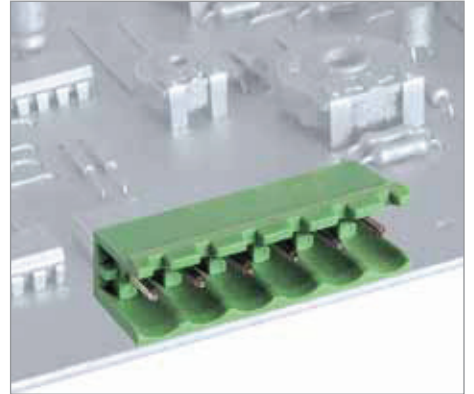
SQ

CPM..A

Blocco unico
Monobloc

Single block
Einzelblock

Poli Poles 2/24



5	5,08
320	
20	

160	
PA - UL 94 V0	

V	A	mm ² /AWG
320	20	0,2 ÷ 2,5
320	20	0,2 ÷ 2,5
300	12	24 ÷ 12

min 2 - max 24	
VE	
D/B4	

Versione
Version

A

P	L (mm)
5	5 x p
5,08	5,08 x p

Versione
Version

SQA

B4

Connettori maschio per C.S.

Headers for P.C.B.

Connecteurs mâle pour C.I.

Stiftleiste für Leiterplatten

Passo Pas	Pitch Rastermaß	mm
Tensione nominale Tension nominale	Rated Voltage Bemessungsspannung	V
Corrente nominale Intensité nominale	Rated Current Bemessungsstrom	A

Temperatura Température	Temperature Temperatur	°C
Corpo isolante Corps isolant	Housing Isolierkörper	

	IMQ	EN61984
	VDE	EN61984
	cUL	UL1059 + C22.2 n°158

Poli Pôles	Poles Polzahl	X
Colore standard Coloris standard	Standard colour Standardfarbe	Y
Altri dati Autres données	Other information Weitere Informationen	Pag Seite

Ordinazione Référence de commande		How to order Bestellschlüssel			
CPM 5 / X		FV	Y	N...	
Tipo Type	Passo Pitch	Poli Poles	Versione Version	Colori Couleurs	Numerazione Printing
Typ	Rastermaß	Polzahl	Version	Farben	Bedruckung

Altri colori a richiesta
Autres couleurs sur demande

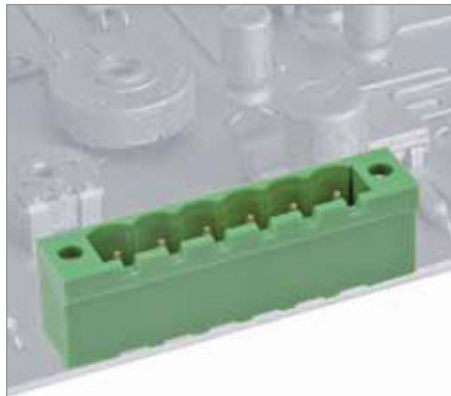
Other colours on demand
Andere Farben bei Bedarf

VE GR NE AR BL RO

CPM..FV CPM..SQFV

Blocco unico Monobloc Single block Einzelblock

Poli Pôles Poles Polzahl 2/20

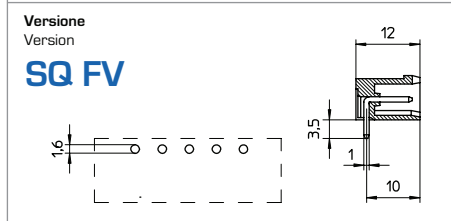
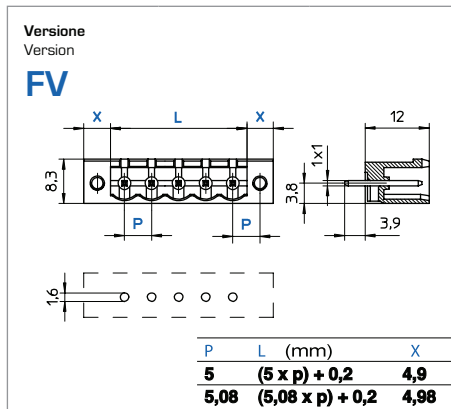


5	5,08
320	20

160	PA - UL 94 VO
-----	---------------

V	A	mm ² /AWG
320	20	0,2 ÷ 2,5
320	20	0,2 ÷ 2,5
300	12	24 ÷ 12

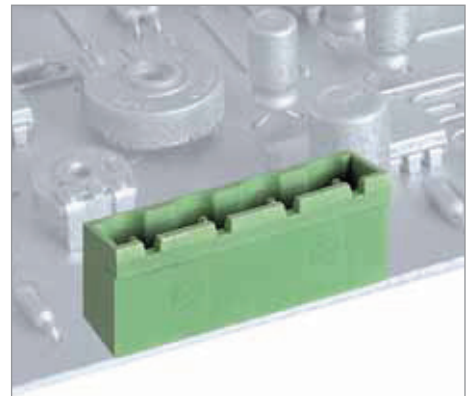
min 2 - max 20
VE
D/B4



CPM CPM..SQ

Blocco unico Monobloc Single block Einzelblock

Poli Pôles Poles Polzahl 2/12

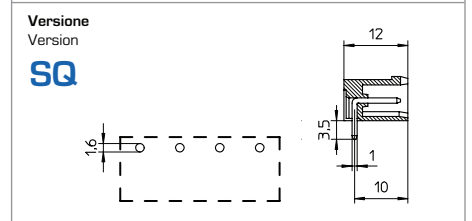
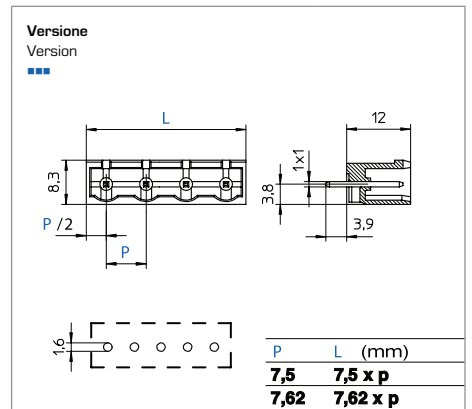


7,5	7,62
500	20

160	PA - UL 94 VO
-----	---------------

V	A	mm ² /AWG
500	20	0,2 ÷ 2,5
500	20	0,2 ÷ 2,5
300	12	24 ÷ 12

min 2 - max 12
VE
D/B4



CPM..A

CPM..SQA

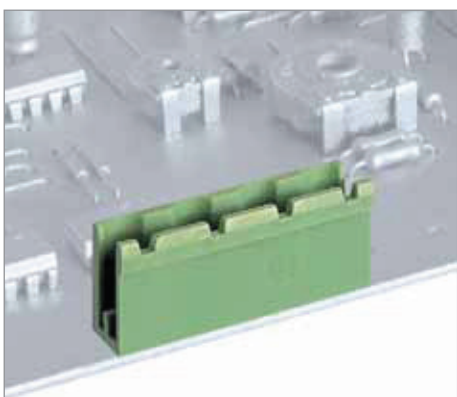
Blocco unico
Monobloc

Single block
Einzelblock

Poli
Póles

Poles
Polzahl

2/12



7,5

7,62

500

20

160

PA - UL 94 V0

V

A

mm²/AWG

500

20

0,2 ÷ 2,5

500

20

0,2 ÷ 2,5

300

12

24 ÷ 12

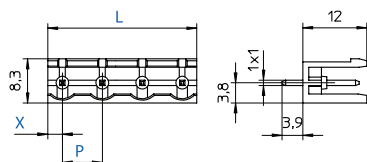
min 2 - max 12

VE

D/B4

Versione
Version

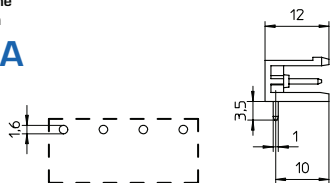
A



P	L (mm)	X
7,5	(7,5 x p)-2	2,75
7,62	(7,62 x p)-2	2,81

Versione
Version

SQA



CPM

CPM..SQ

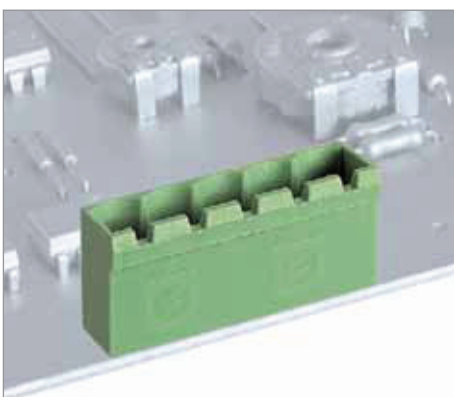
Blocco unico
Monobloc

Single block
Einzelblock

Poli
Póles

Poles
Polzahl

2/12



10

10,16

630

20

160

PA - UL 94 V0

V

A

mm²/AWG

630

20

0,2 ÷ 2,5

630

20

0,2 ÷ 2,5

300

12

24 ÷ 12

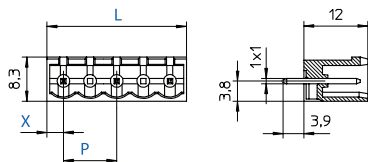
min 2 - max 12

VE

D/B4

Versione
Version

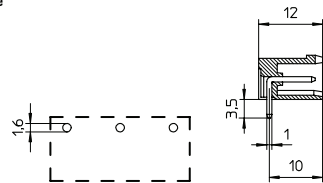
SQ



P	L (mm)	X
10	(10 x p)-3,8	3,1
10,16	(10,16 x p)-3,88	3,14

Versione
Version

SQA



CPM..A

CPM..SQA

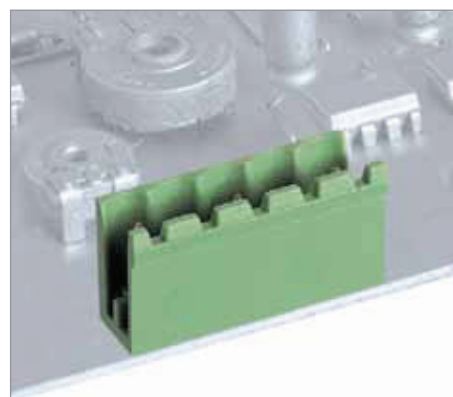
Blocco unico
Monobloc

Single block
Einzelblock

Poli
Póles

Poles
Polzahl

2/12



10

10,16

630

20

160

PA - UL 94 V0

V

A

mm²/AWG

630

20

0,2 ÷ 2,5

630

20

0,2 ÷ 2,5

300

12

24 ÷ 12

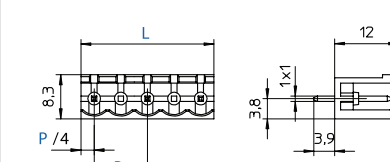
min 2 - max 12

VE

D/B4

Versione
Version

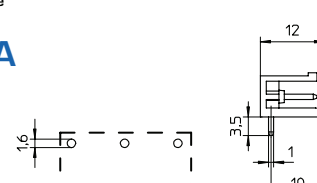
A



P	L (mm)	X
10	(10 x p)-5	
10,16	(10,16 x p)-5,08	

Versione
Version

SQA



B4

Connettori maschio per C.S.

Headers for P.C.B.

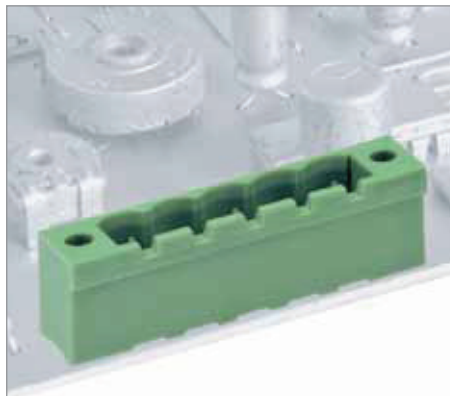
Connecteurs mâle pour C.I.

Stiftleiste für Leiterplatten

CPM..FV CPM..SQFV

Blocco unico Monobloc Single block Einzelblock

Poli Poles 2/10

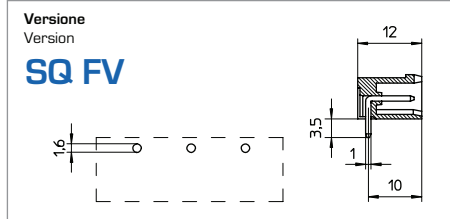
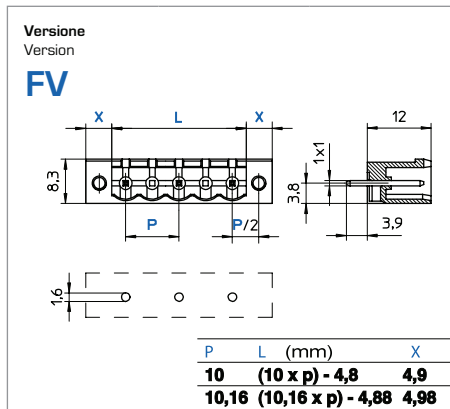


10	10,16
630	
20	

160	
PA - UL 94 V0	

V	A	mm ² /AWG
630	20	0,2 ÷ 2,5
630	20	0,2 ÷ 2,5
300	12	24 ÷ 12

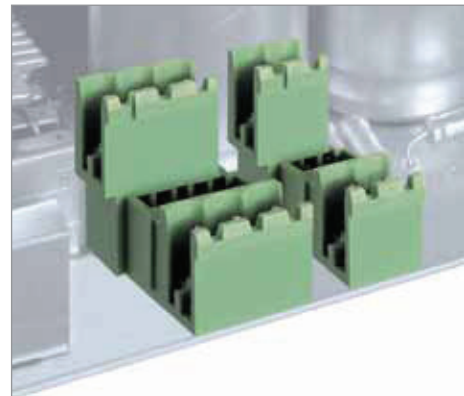
min 2 - max 10
VE
D/B4



MRT21 MRT21..SQ

Modulo componibile Elements modulaires Interlocking modules Zusammensteckbare Blöcke

Poli Poles 2/3

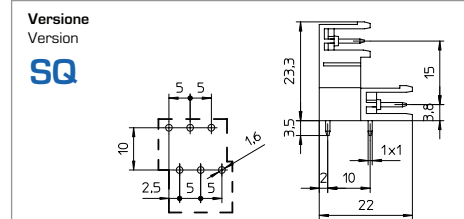
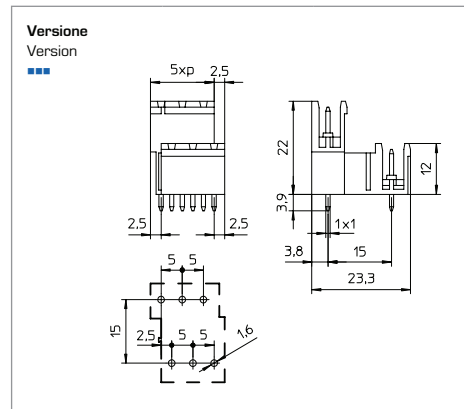


5
320
20

160
PA - UL 94 V0

V	A	mm ² /AWG
320	20	0,2 ÷ 2,5
320	20	0,2 ÷ 2,5
300	12	30 ÷ 12

min 2 - max ...
VE
D/B4



Passo Pas	Pitch Rastermaß	mm
Tensione nominale Tension nominale	Rated Voltage Bemessungsspannung	V
Corrente nominale Intensité nominale	Rated Current Bemessungsstrom	A

Temperatura Température	Temperature Temperatur	°C
Corpo isolante Corps isolant	Housing Isolierkörper	

IMQ	EN61984
VDE	EN61984
cUL	UL1059 + C22.2 n°158

Poli Poles	Poles Polzahl	X
Colore standard Coloris standard	Standard colour Standardfarbe	Y
Altri dati Autres données	Other information Weitere Informationen	Pag Seite

Ordinazione Référence de commande

How to order Bestellschlüssel

CPM 10 / X FV Y N...

Tipo Type	Passo Pitch	Poli Poles	Versione Version	Colori Colors	Numerazione Printing
Type	Pas	Pöles	Version	Couleurs	Marquage
Typ	Rastermaß	Polzahl	Version	Farben	Bedruckung

Altri colori a richiesta Autres couleurs sur demande

Other colours on demand Andere Farben bei Bedarf

VE GR NE AR BL RO